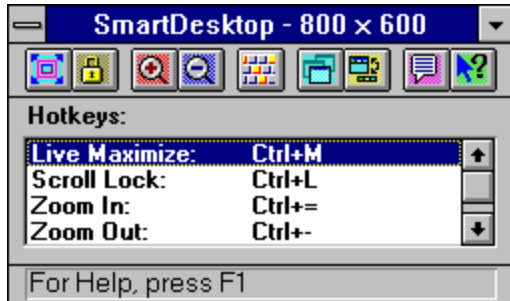


## VideoLogic SmartDesktop

The VideoLogic SmartDesktop application lets you zoom in and out, changing the [display size](#) without having to restart Windows. You can also use SmartDesktop to control the way in which your display behaves when the [desktop size](#) is larger than the display size (this is sometimes called a virtual desktop).

For information on the features provided by the SmartDesktop, click on the various parts of the dialog box below.



When your desktop size is larger than your display size, SmartDesktop tiles or cascades windows in the current display area instead of the desktop, and, where possible, centers dialog boxes in the display.



## Scroll Lock

Scroll Lock prevents you from scrolling around the desktop area using the mouse. Use this feature to avoid accidentally scrolling the desktop.

To switch off Scroll Lock, press the Scroll Lock button again.

Alternatively, you can select Scroll Lock by pressing its [hotkey](#) combination. By default, this hotkey combination is CTRL+L, but you can change it to a different key combination if you prefer. To set your own [hotkey](#) combination, see [Changing the hotkey settings](#).



## Zoom In

Choose the Zoom In button to reduce the area of the display. When the display size reaches its smallest possible value (640 x 480), choosing the Zoom In button has no effect.

You can choose Zoom In by pressing its hotkey combination. By default, this hotkey combination is CTRL+=, but you can change this to a different key combination if you prefer. To set your own [hotkey](#) combination, see [Changing the hotkey settings](#).



## Zoom Out

Choose the Zoom Out button to enlarge the display size. When the display size reaches its highest possible value, choosing the Zoom In button has no effect.

You can also zoom out by pressing the hotkey combination assigned to Zoom Out. By default, this combination is CTRL+-. To set your own [hotkey](#) combination, see [Changing the hotkey settings](#).



## Window On Top

Select the Window On Top button to keep the SmartDesktop window on top of all your other windows.

To switch off this function, press the Window on Top button again.

To set a [hotkey](#) combination for Window On Top, see [Changing the hotkey settings](#).



## Floating Toolbar

Select the Floating Toolbar button to reduce the size of the SmartDesktop application window, as shown below.



The floating toolbar stays in the same position on the display when you scroll around the desktop. If you place it close to the right hand edge or the bottom of the display, it will stay in this position when you zoom in or zoom out.

To return the SmartDesktop window to its normal size, press the Floating Toolbar button again.

To set a [hotkey](#) combination for Floating Toolbar, see [Changing the hotkey settings](#).



## About

Choose the About button for information about the version of SmartDesktop you are using.

To set a [hotkey](#) combination for About, see [Changing the hotkey settings](#).



## Help

When you choose the Help button the pointer changes to an arrow and question mark. For information on a particular SmartDesktop function, click on the relevant area of the SmartDesktop window.





## Default hotkeys

Choose the Default hotkeys button to reset all the hotkeys to their default (original) settings. The default settings are:

<a href="#">Live Maximize</a>	CTRL+M
<a href="#">Scroll Lock</a>	CTRL+L
<a href="#">Zoom In</a>	CTRL+=
<a href="#">Zoom Out</a>	CTRL+-
DEFAULT HOTKEYS	NOT ASSIGNED
<a href="#">Window on Top</a>	NOT ASSIGNED
<a href="#">Floating Toolbar</a>	NOT ASSIGNED
<a href="#">About</a>	NOT ASSIGNED
<a href="#">Scroll Left</a>	NOT ASSIGNED
<a href="#">Scroll Right</a>	NOT ASSIGNED
<a href="#">Scroll Up</a>	NOT ASSIGNED
<a href="#">Scroll Down</a>	NOT ASSIGNED

To set your own key combinations for the hotkeys, see [Changing the hotkey settings](#).

## Changing the hotkey settings

You can carry out each of the functions of VideoLogic SmartDesktop using a special hotkey combination. When you first use SmartDesktop, some options have hotkey combinations assigned to them by default, while others are unassigned. You can customize these options to use the key combinations of your choice.

To change the hotkey settings:

1. Select the function that you want to change by double-clicking on its name in the list-box, or by scrolling through the list and pressing ENTER.
2. In the dialog provided, enter the new hotkey combination that you want and choose OK.

Note that there are limitations to the key combinations you can use for hotkeys: these are the [Illegal Hotkeys](#) and [Commonly used hotkeys](#).

You can change back to the default (original) hotkey settings at any time using the default hotkey button.

## **Illegal hotkeys**

Some keystrokes (such as ENTER) are reserved for your computers system software. You cannot select these as hotkeys.

## **Commonly used hotkeys**

Some key combinations are commonly used in other applications, such as CTRL+O for Open. If you try to assign one of these combinations as a SmartDesktop hotkey, SmartDesktop asks you to confirm your choice. If you confirm your selection, you will be not be able to use this key combination as a shortcut in your other applications.

## Control Menu

The Control menu contains the following commands:

- Restore** Restores a minimized window to its former size.
- Move** Allows you to use the keyboard to move the window to another position.
- Minimize** Reduces the SmartDesktop Window to an icon. This command has the same effect as the Minimize Button.
- Close** Exits the SmartDesktop application.
- Switch to** Takes you to the Windows Task List.

## **Minimize Button**

The Minimize button reduces the SmartDesktop window to an icon. This button has the same effect as choosing the Minimize command from the Control menu.

## **Scroll Left**

This function moves the display to the left in the desktop area. Moves are in units of the display area; for example, a 640 x 480 display moves 640 pixels to the left.

## **Scroll Right**

This function moves the display to the right in the desktop area. Moves are in units of the display area; for example, a 640 x 480 display moves 640 pixels to the right.



## **Scroll Up**

This function moves the display towards the top of the desktop area. Moves are in units of the display area; for example, a 640 x 480 display moves up 480 pixels.

## **Scroll Down**

This function moves the display towards the bottom of the desktop area. Moves are in units of the display area; for example, a 640 x 480 display moves down 480 pixels.

## **display size**

The display size defines the number of [pixels](#) used to make up the image displayed on your computer monitor.

The display size (sometimes called the display resolution) is expressed as the number of pixels in each horizontal line and the total number of lines. For example, a display size of 800 x 600 displays 800 pixels per line and 600 lines.

Using SmartDesktop you can set display sizes from 640 x 480 to the size of your desktop, but your ability to choose the larger display sizes will depend on the capabilities of your monitor. If your display is smaller than your desktop, moving the mouse to the edge of the display causes the desktop to scroll, showing those areas of the desktop that extend beyond the display.

## **desktop size**

The desktop size defines the number of [pixels](#) used to make up the Windows desktop. You set the desktop size using the GrafixStar Display application.

The desktop size is expressed as the number of pixels in each horizontal line and the total number of lines. A desktop size of 1152 x 864 has 1152 pixels per line and 864 lines.

If your desktop size is larger than your display size, moving the mouse to the edge of the display causes the desktop to scroll, showing those areas of the desktop that extend beyond the display. When the desktop extends beyond the limits of your display it is sometimes called a virtual desktop.

## **Status Bar**

The status bar gives brief information on the button you are currently pressing.



## Live Maximize

With Live Maximize selected, pressing the maximize button on a window expands it to fill the display and not the desktop. Also, maximized windows are maximized to the new display size when you zoom in or zoom out.

You can also perform the Live Maximize operation by pressing the hotkey combination assigned to Live Maximize. By default, this combination is CTRL+M. If you want to set your own hotkey combination for Live Maximize, see [Changing the hotkey settings](#).

## **Title Bar**

The title bar contains the name of the program you are using and the current display size. You can use the title bar to drag the window around the desktop using the mouse.

## **Restore**

Restores a minimized window to its former size.



## **Move**

Allows you to use the keyboard to move the window to another position.

## **Minimize**

Reduces the SmartDesktop window to an icon. This command has the same effect as the Minimize button.

## **Close**

Exits the SmartDesktop application.

## **Switch To**

Takes you to the Windows Task List.

## **hotkeys**

A key or a combination of keys which provide a quick way of performing a command or action.

## **pixels**

Pixels are the small colored dots used by Windows to make up your display and your desktop.

